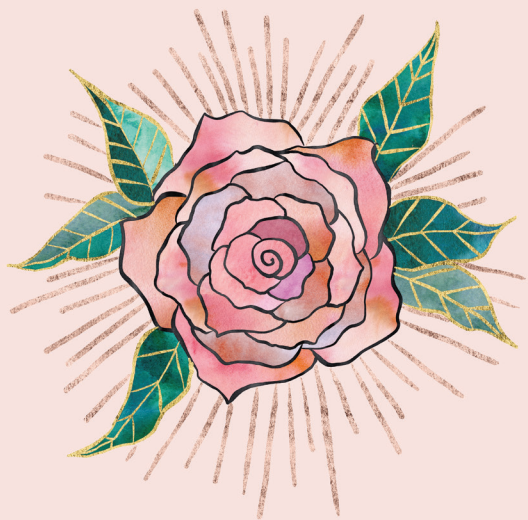


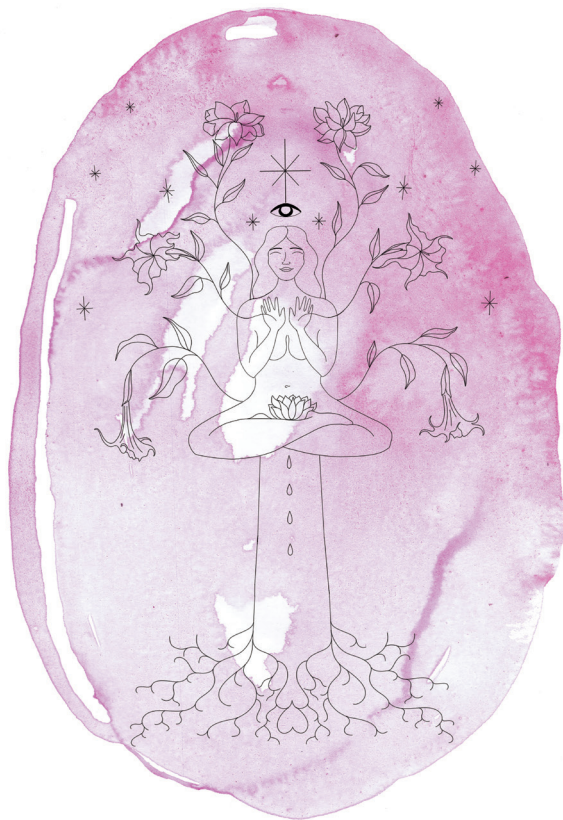
I



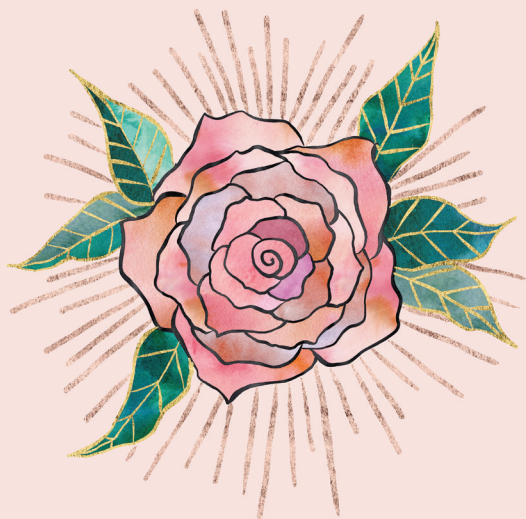
Seeds of Creation



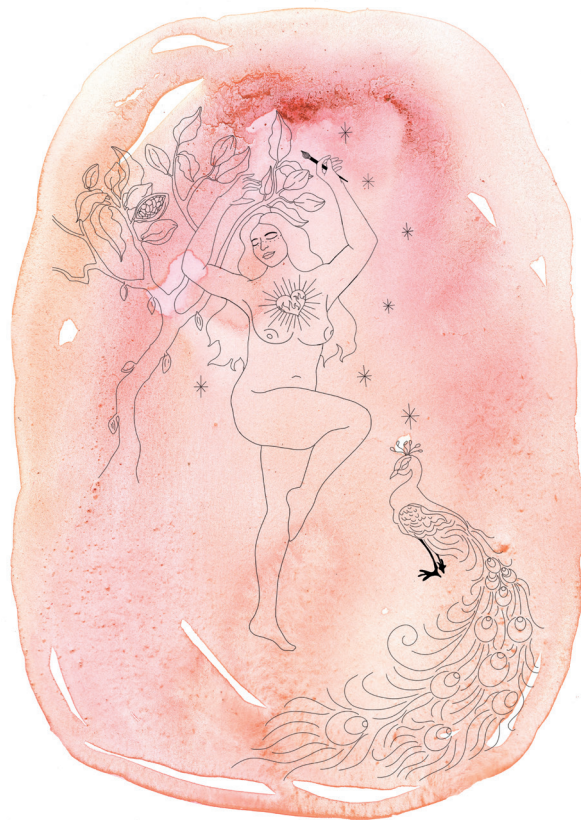
II



You Are the Bridge

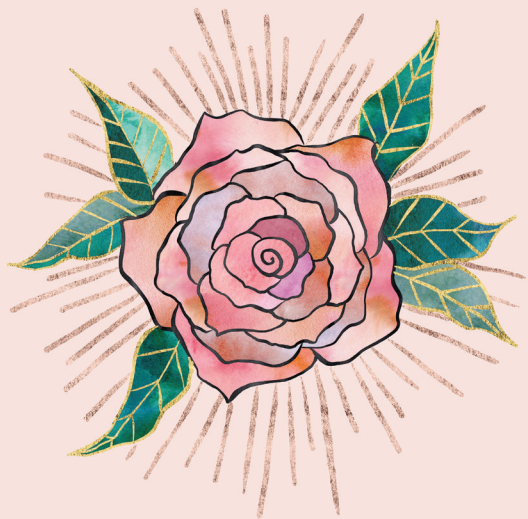


III

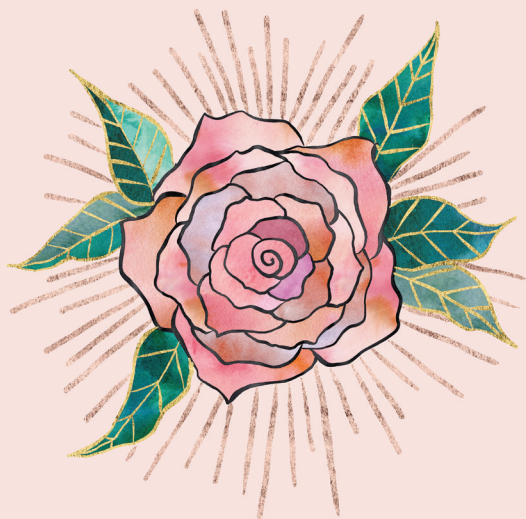


Your Heart's Expression

IV



Returning to the Elements



V



Divine Passion

About This Deck

Welcome to *Messages from the Heart of the Divine*. This oracle deck is a simple, transformative tool to come home to the healing power of your heart. Your beautiful and bountiful heart is a bridge for all that is sacred. It carries the keys for all the wisdom you seek, all that you desire to create or become, and all the nourishment your soul needs in this lifetime. It is in the deep flowing waters of your heart where endless waves of hope, trust, and peace arise to lead you to alignment on your spiritual path. This deck acts as a mirror to reflect to you the radiant Divine love that already resides within, empowering you with the wisdom of your heart, your greatest healing gift in this life, so that you may become a vehicle for more love to stream through your being. This is your true essence and soul's purpose for being here, a sacred vessel of eternal love at this time on this planet. In connecting to your heart's truth, you can deepen your relationship with yourself, the Divine, as well as the Earth, feeling the abundant support that always surrounds you.

If you are drawn to this deck, it is because you are a sensitive soul who requires deep nourishment and focused awareness to stay balanced, and this deck can support you in this, anchoring you into grace like an unconditional loving hand from the Divine Mother. By engaging with this deck, you are engaging with the energies of love and creation, the holy spark of life.

By feeling into these subtle energies, shifting your perspective to witness a deeper awareness of love, waves of healing can wash through your life. When you spend more time listening to your heart and attuning to your sensitivities, you can navigate this great mystery of life with greater ease.

You are the oracle; this deck simply offers guidance for you to see that within yourself. By working with this deck, you can increase your connection to your innate healing powers and intuitive wisdom, see yourself more clearly through the lens of your higher self, and feel more in alignment with your true nature. This deck can lead you toward more receptivity to love and life and to greater clarity. It can assist in awakening courage and confidence, allowing you to show up as who you really are in the world. When your heart beats in harmony with your true nature, balance can be restored within and without.

Each card in this deck is like a portal into your soul. All the messages are channeled from the heart to the heart to inspire spiritual liberation—to liberate the heart to feel, heal, express, and love in its fullest potential, aligned with your soul's true essence. When you use this deck as healing for your holy heart, you in turn will naturally provide healing to the heart of Earth and all of humanity, guiding our planet back into a reflection of Divine love and wholeness.

All words, colors, and images hold vibratory frequencies that can create a shift in our own vibration when taken

in through our senses. This deck has been painted with plant and mineral pigments, natural waters from the rivers, creeks, and oceans, and flower essences to encode each card with a specific alchemy of Earth healing. Simply taking in the colors and images of a card can cause subtle and beautiful shifts in your being. Regularly working with this deck as a tool for self-healing and spiritual connection can create profound transformations in your life. You don't have to understand it with your conscious mind—in fact, try not to analyze too much, and just allow your heart to gently open like a blooming rose and guide you along. There isn't a manual for intuition, or for how to trust in Spirit or energy. This is because intuition is an embodied state unique to each individual and requires feeling into your more subtle senses.

Allow this deck to be your sacred mirror, dear heart, reflecting all the love that is already within you. May these cards guide you to remember who you really are: Divine love embodied. May you be brave to explore the depths of your heart. May you express your love light freely. Always remember that your heart is a gift to this world, a reflection of divinity.

How to Use This Deck

Before using this deck take a few moments to center and ground yourself by taking a few deep breaths and con-

necting to your body and heart, finding your center of stillness within. It's always nice to create a quiet, comfortable space without distractions to use this deck—at your altar, with a cup of warm tea, somewhere in nature, or just somewhere you will not be disturbed—so you can be still and listen to your spirit, connecting deeper to your breath of life and soul's essence. This also allows you to get in tune with the energy of the deck and become more receptive to its messages and medicine.

Cleanse and clear your deck before use with the smoke of your favorite, consciously obtained herb, a selenite wand, a few knocks (holding the deck in your left hand and knocking on the pile of cards a few times with your right hand), or simply by holding the deck to your heart and sending it the energy of your love.

When you are ready, call upon your guides and higher self. If you do not know who your guides are, this is a good way to get to know them! Close your eyes, place your hands on your heart, and say out loud or in your head, "I call upon the benevolent beings of unconditional love who guide me, and my higher self, to support me in this reading for my highest good." You can then add in your question. You can ask a question about anything you are seeking clarity or guidance on or simply, "What message do I need to hear today?" Shuffle the deck with your intention until it feels right and pull a card from anywhere in the deck. There is no right or wrong way to pull a card, just follow your intuition. The answer you receive will always be a reflection of your

heart in that moment in regard to your question. The only questions you will want to avoid are yes-or-no questions because this deck does not give yes-or-no answers.

You may find that you draw the same card over and over and over again. Maybe you use this deck for a year and see only the same three cards. That is simply the Divine intelligence of this deck reflecting what is in your heart, guiding you to notice it. Sometimes things take a little time to work their way into our awareness, so Spirit will help us out by bringing a message to us again and again. Maybe a card even flies out of the deck and hits you in the face! Jumping cards are clear messages to pay even more attention to what the card is bringing forth. There are no coincidences. Sometimes you may draw a card that will reflect something deeper to you, that seemingly has nothing to do with your question. There is a reason for this also. Allow it to take you deeper into your heart.

Rituals

After reading the message in this book that corresponds with the card you choose, you may want to follow up with its corresponding ritual to further absorb the energetic medicine the card is bringing to you. I recommend creating an altar or sacred space in your home where you can pull your cards and do your rituals. Or choose a place out-

side to more deeply connect with the heart of the Earth. At your altar you may wish to light a candle and set out a crystal, found natural objects, talismans, fresh flowers, or anything else that inspires love within.

All the rituals in this deck are simple, quick practices that can have profound effects when performed consciously with intention. They can help you to take the medicine and guidance of each card and integrate their healings into your being. The rituals work on unseen levels, designed to shift subtle energies. You may not understand what is happening, or what you are even doing, and that is okay. Subtle healing is powerful but cannot always be understood with the mind. It instead needs to be felt in the heart, with our more heightened, sensitive levels of awareness. Don't worry if you feel like you are not doing it right. As long as you have the intention to heal, and open your heart to receive, healing is happening. Trust that the Divine is supporting you in this.

You may also open the book at any point and randomly choose a ritual to include in your daily practice as a way to connect more deeply to your heart and spirit. You also might like to place a card that is speaking to you on your altar, desk, refrigerator, or bedside table for the week as a reminder of its message to guide you through your healing during that time. You can attune to the frequency of the card each day by sitting with it, placing the card

to your heart, or simply looking at the card, allowing its message and energetic blueprint to activate healing.

Notes on Closings

Always thank your heart, your guides, and the Divine when you are finished working with your deck for the day. Gratitude is an important aspect of this heart work and has the simple power to transform and open your heart to a greater experience of love. You can say a little prayer you make up or simply just say, “Thank you,” with loving intention when you finish your reading.

Spreads

This deck is best used regularly by connecting to one card at a time, especially when you are just beginning to get to know your deck. Too many cards can be confusing or overwhelming, especially if you are new to working with cards as a form of divination and energy healing. If you are feeling called to pull more cards for clarity on a subject, I have provided the following two spreads that can be used weekly, monthly, or whenever you are feeling called to spend more time diving more deeply into your healing process.